

8. property owners name and address  
 Ernest A. Alexas, et.al.  
 2170 Southeast 17th Street  
 Fort Lauderdale, FL 33316

9. tax parcel number/other number  
 41-34-283

10. U.T.M. Zone easting northing  
 usgs sheet: Somerset

11. status (other surveys, lists etc.)  
 N/A

12. classification  
 site ( ) structure ( ) object ( )  
 building (X) district ( )

13. date(s) (how determined)  
 1895 (newspapers)  
 14. period  
 1881-1899

15. style, design or folk type  
 Vernacular

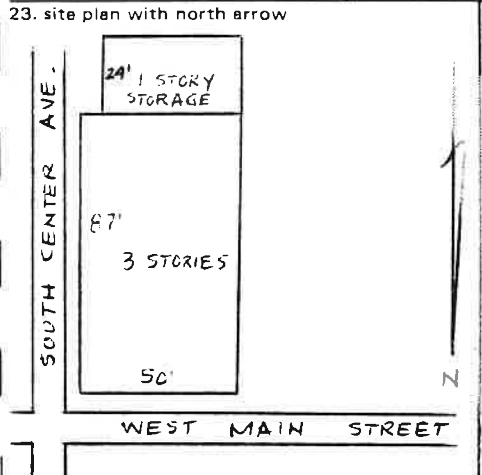
19. original use  
 hotel  
 20. present use  
 commercial

16. architect or engineer

17. contractor or builder

18. primary building mat./construc.  
 brick

21. condition  
 excellent  
 22. integrity  
 modified



24. photo notation  
 northeast view, 1985

25. file/location

26. brief description (note unusual features, integrity, environment, threats and associated buildings)  
 This three-story brick structure, when erected in 1895, was a Second-Empire style hotel with mansard roof and a projecting center tower with arched recessed openings. These details were removed after fire damaged the hotel in 1931. As seen in  
 (continued on back) (continue on back if necessary)

27. history, significance and/or background  
 This large commercial structure occupies a corner of Somerset's public square, the site of an early well-known hostelry called the Glade House. Charles Vannear of Greensburg purchased the Glade House in 1891, tore it down, and erected in its place the modern and commodious four-story Hotel Vannear. Vannear was also the proprietor of the Park Hotel on Patriot Street, a structure which burned in 1893.  
 (continued on back) (continue on back if necessary)

28. sources of information  
 Please see back (continue on back if necessary)

29. prepared by:  
 Glessner & Lehman

Computer Coding (BHP Survey Grantees Must Complete)

30. date  
 6/21/85

31. county 111 32. style \_\_\_\_\_  
 33. construction material 03; \_\_\_\_\_ 34. roof 06; \_\_\_\_\_  
 35. design type 86; 03; \_\_\_\_\_  
 36. historic function 060500 P; 061200 S; \_\_\_\_\_  
 37. construction feature \_\_\_\_\_ 38. ext. walls 03; 39. plan 03  
 40. facade width 6 41. roof material 32 42. stories E 43. depth 6  
 44. ext. design \_\_\_\_\_  
 45. int. design \_\_\_\_\_

1. County  
 Somerset

2. municipality  
 Somerset Borough

3. street address or specific location  
 Corner of West Main Street and South Center Avenue

4. survey code  
 111-SM-435

5. present name  
 HEALTH MART

6. other name (historic name if any)  
 HOTEL VANNEAR

26. historic photographs, the high-style hotel had large plate glass display windows at ground level, a rounded projecting bay on the second and third floor of the front facade, and numerous gable-roofed dormers projecting from the mansard roof. The entrance tower centered on the front elevation had a conical roof topped with a finial.

Today the former hotel is a flat-roofed structure with only a slight offset in the cornice line to indicate the location of the entrance tower. Rounded projecting bays covered with decorative wood shingles remain only on the east facade. The arched entry on this side of the building has been closed. A walkway links the upstairs of this building to the second floor of the adjacent retail building.

27. An 1895 Somerset Herald description of the new hotel indicates the elegance of the lobby:

( "The main and private dining rooms are separated by a pair of sliding doors, each containing an immense sheet of chipped plate glass. The firm furnishing the glass has advised Mr. Vannear that these two sheets of glass are the largest of their kind ever made in the United States, and it is believed they are the largest ever made in the world."

By the 1920's the Hotel Vannear dining room and lobby had been converted to retail space. Ownership of the property passed to Achilles Alexas, a Johnstown businessman, in 1926. In 1931 the Hotel was seriously damaged by fire, resulting in the removal of the mansard roof and dormers. Today the upper floors of the building are vacant. The building is the last of Somerset's uptown hotels, a reminder of the pre-automobile era when Somerset was a favorite vacation spot for city dwellers.

28. Somerset Sesquicentennial Committee. Sketches of Somerset. Somerset, Pennsylvania: 1954.

Somerset Herald Microfilm, 1891-1895.

Somerset County Recorder of Deeds Office

EVALUATION

EVALUATOR(S)